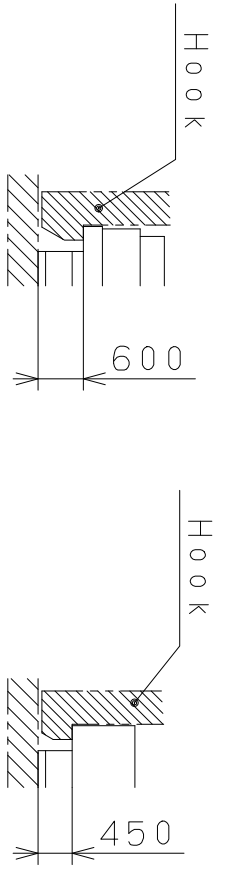
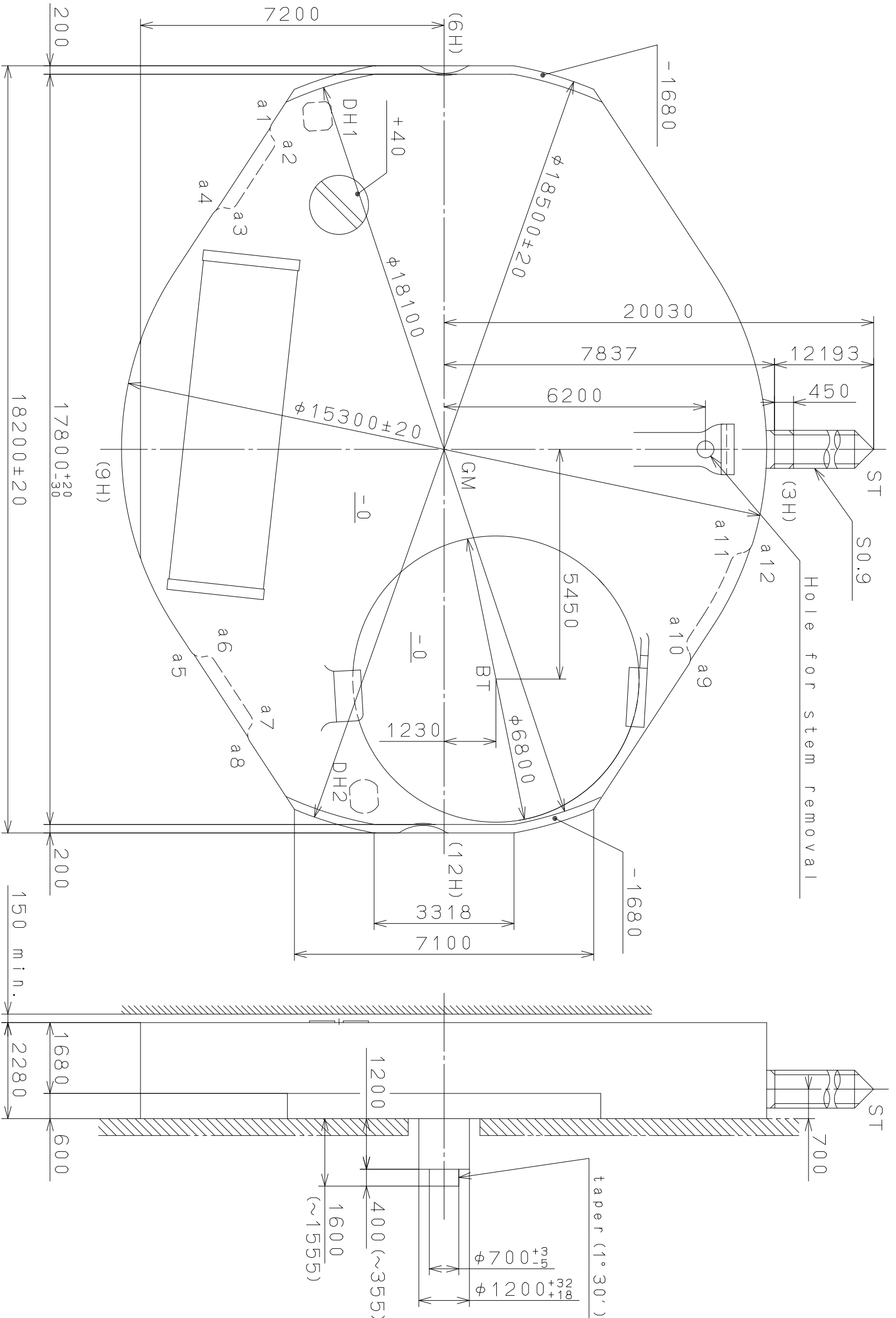


This drawing is provisional and subject to our reconfirmation and/or revision without notice.

DH1~DH2=16171 (±20)

Coordinates

Mark	X	Y	R
GM	0	0	—
DH1	-7900	-3000	—
DH2	8234	-1900	—
a1	-7569	-3828	300
a2	-7252	-4215	200
a3	-5914	-5092	200
a4	-5433	-5228	300
a5	4625	-5757	300
a6	5106	-5621	200
a7	6444	-4745	200
a8	6761	-4358	300
a9	4947	5546	300
a10	4628	6054	300
a11	2754	7083	300
a12	2157	7026	300



Section a1~a4, a5~a8 Section a9~a12

Mark	Date	Description	Appr.	Checked	Drawn	Name
△		Alterations	Approved			N. Suzuki
△		Material				Frame for Case
△		Heat Treatment				Drawing No.: GL26C000
△		Hardness				
△		Plating				

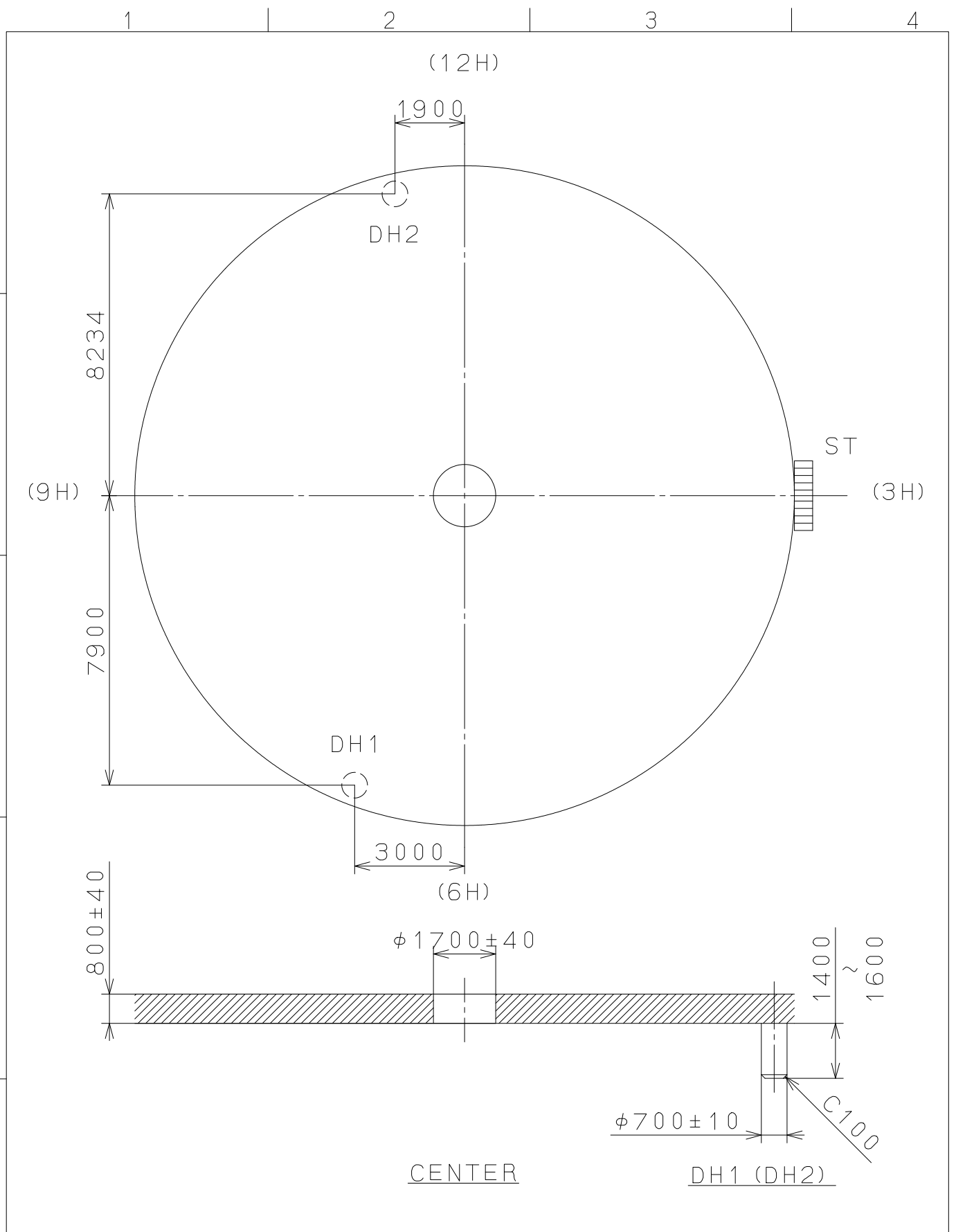
Quantity	Unit	Cal. NO.:
1	1/1000 mm	GL26
Scale	10:1	Parts No.:
Date		
Drawn		

Material	General Tolerances
ST S0.9	
Heat Treatment	Dimensions
Hardness	Angles

**MIYOTA**  
CITIZEN WATCH CO., LTD. TOKYO, JAPAN

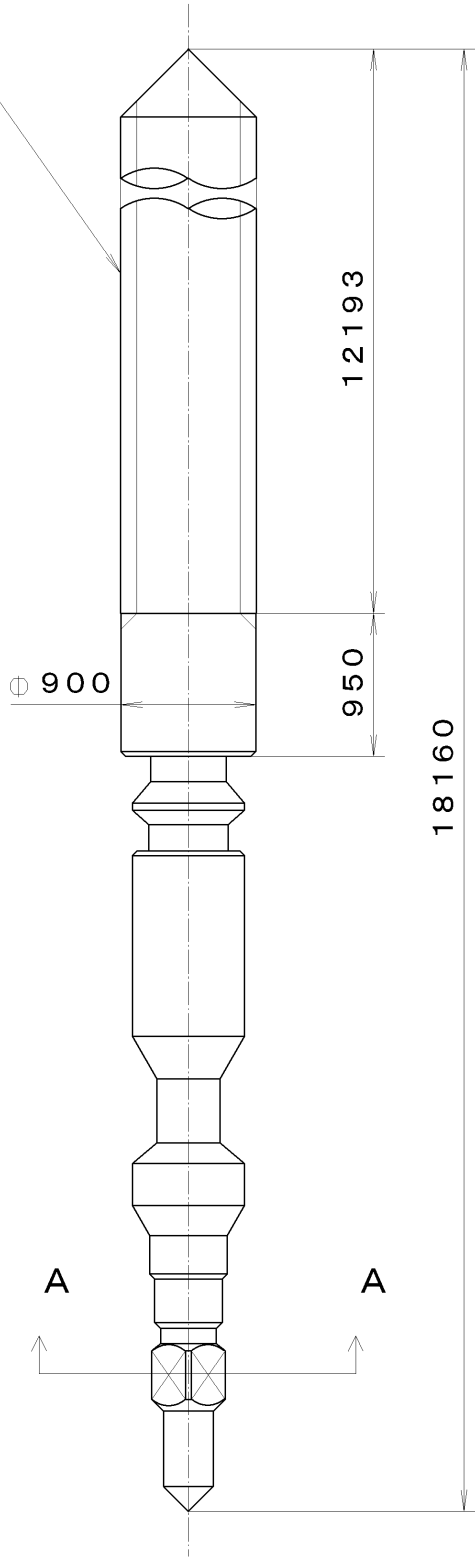
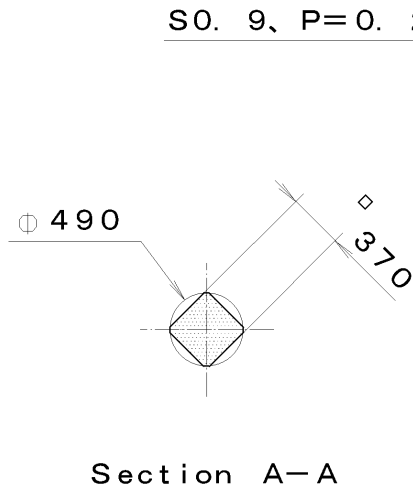
This drawing is provisional and subject to our reconfirmation and/or revision without notice.



△			Quantity		Cal.NO.:
△			Unit	1 / 1000 mm	GL26-S0A
△			Scale	7 : 1	Parts No.:
△			Date		
△			Drawn		
Mark	Date	Description	Appr.	Checked	Name:
		Alterations	Approved	N. Suzuki	Indications for Dial
Material					Drawing No.: GL26D0AS
Heat Treatment			General Tolerances	<b>MIYOTA</b> CITIZEN WATCH CO., LTD. TOKYO, JAPAN	
Hardness			Dimensions		
Plating			Angles		

This drawing is provisional and subject to our reconfirmation and/or revision without notice.

\*\*\* T I P W 065-541 (01) \*\*\* (2100 1121) 02-07-12



7			Quantity		Cal. No. :
6			Unit	1/1000 mm	
5			Scale	20:1	Parts:
4			Date		065-541
3			Drawn		
2			Checked	T. Hiruta	Name:
1			Approved		SETTING STEM
Material					Drawing No. : 5410S000
Heat Treatment			General Tolerances		<b>CITIZEN</b> WATCH CO., LTD. TOKYO, JAPAN
Hardness			Dimensions		
Plating			Angles		