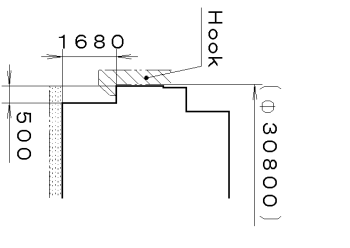
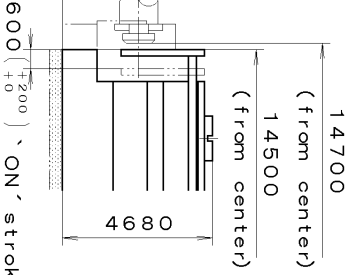
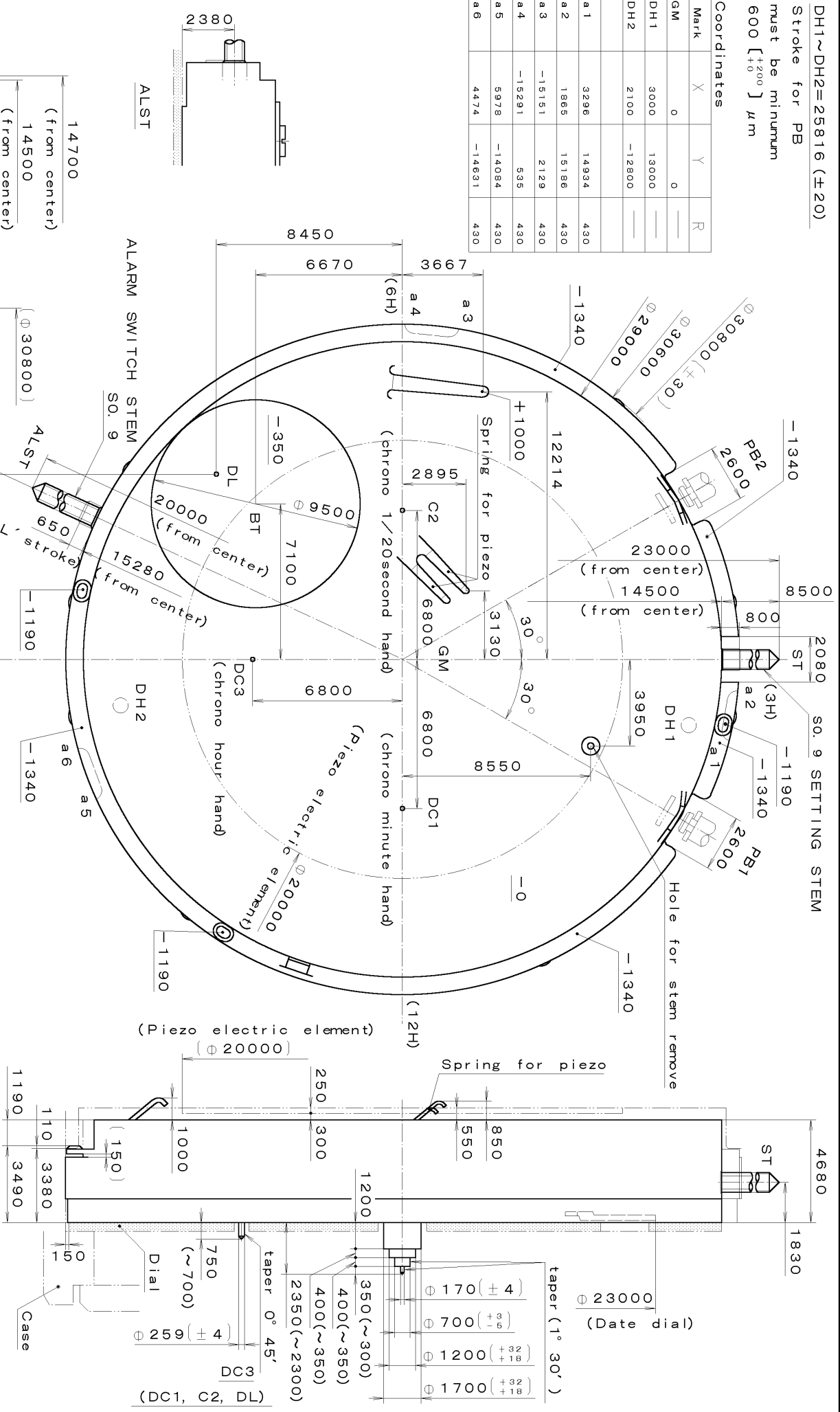


DH1~DH2=25816 (±20)
Stroke for PB
must be minimum
600 [$+200$] μm

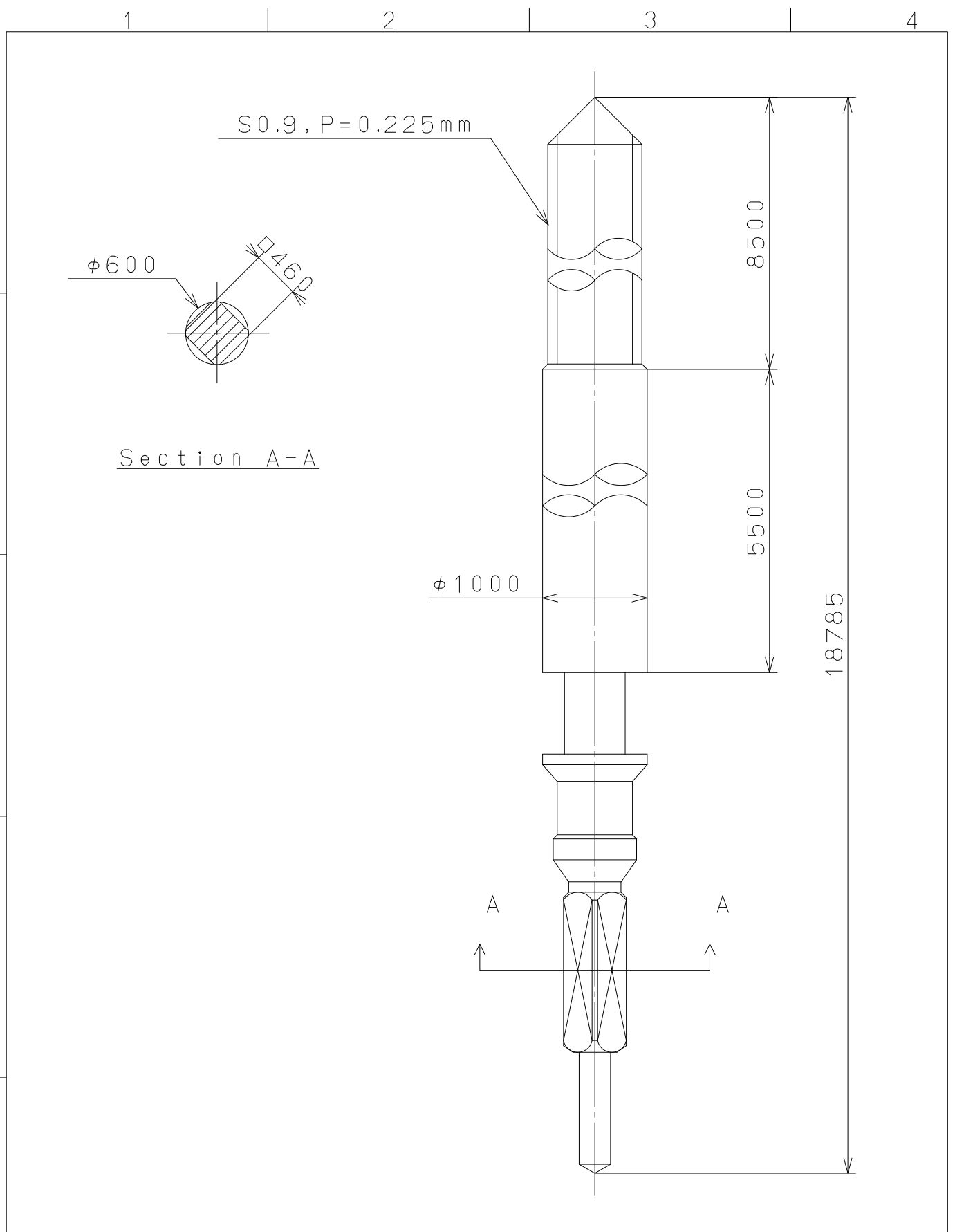
Coordinates			
Mark	X	Y	R
GM	0	0	
DH1	3000	13000	
DH2	2100	-12800	
a1	3296	14934	430
a2	1865	15186	430
a3	-15151	2129	430
a4	-15291	535	430
a5	5978	-14084	430
a6	4474	-14631	430



Quantity	Unit	Scale	Cal. No. :
△	1/1000 mm	6:1	OS80
△			Parts:
△			Drawn
△			Checked
△			Approved
Material			Name:
Heat Treatment			Frame for Case
Hardness			Drawing No. : OS80C000
Plating			
General Tolerances			
Dimensions			
Angles			

MIYOTA

This drawing is provisional and subject to our reconfirmation and/or revision without notice.

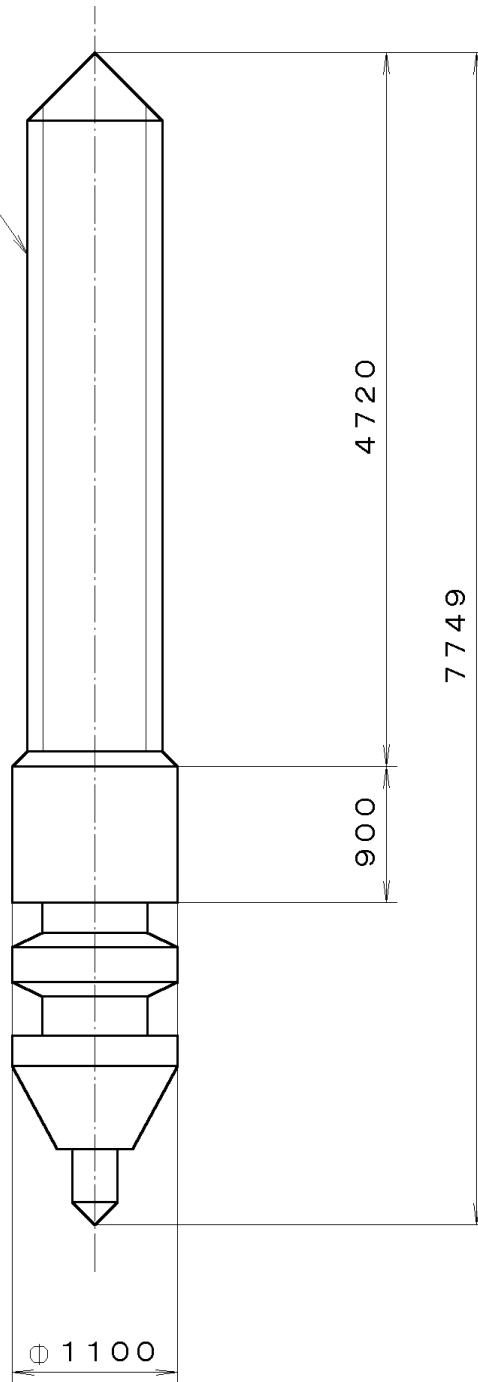


△5			Quantity		Cal.NO.:
△4			Unit	1 / 1000 mm	
△3			Scale	20 : 1	Parts No.:
△2			Date		065-453
△1			Drawn		
Mark	Date	Description	Appr.	Checked	E. Murakami
Alterations			Approved	Name: SETTING STEM	
Material					Drawing No.: 4530S000
Heat Treatment	General Tolerances				MIYOTA
Hardness	Dimensions				
Plating	Angles				
					CITIZEN WATCH CO., LTD. TOKYO, JAPAN

This drawing is provisional and subject to our reconfirmation and/or revision without notice.

065-513 (01) *** (2100 1121) 00-07-03

S0. 9, P=0. 225mm



7			Quantity		Cal. No. :
6			Unit	1/1000 mm	
5			Scale	20:1	Parts:
4			Date		065-513
3			Drawn		
2			Checked	T. Hiruta	Name:
1			Approved		SETTING STEM
Material					Drawing No. : 5130S000
Heat Treatment			General Tolerances		MIYOTA
Hardness			Dimensions		
Plating			Angles		