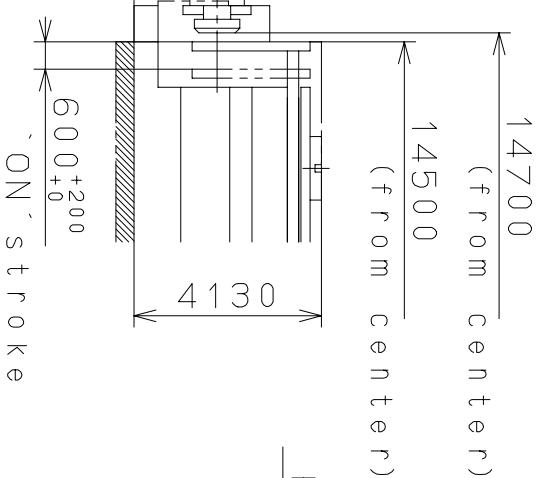
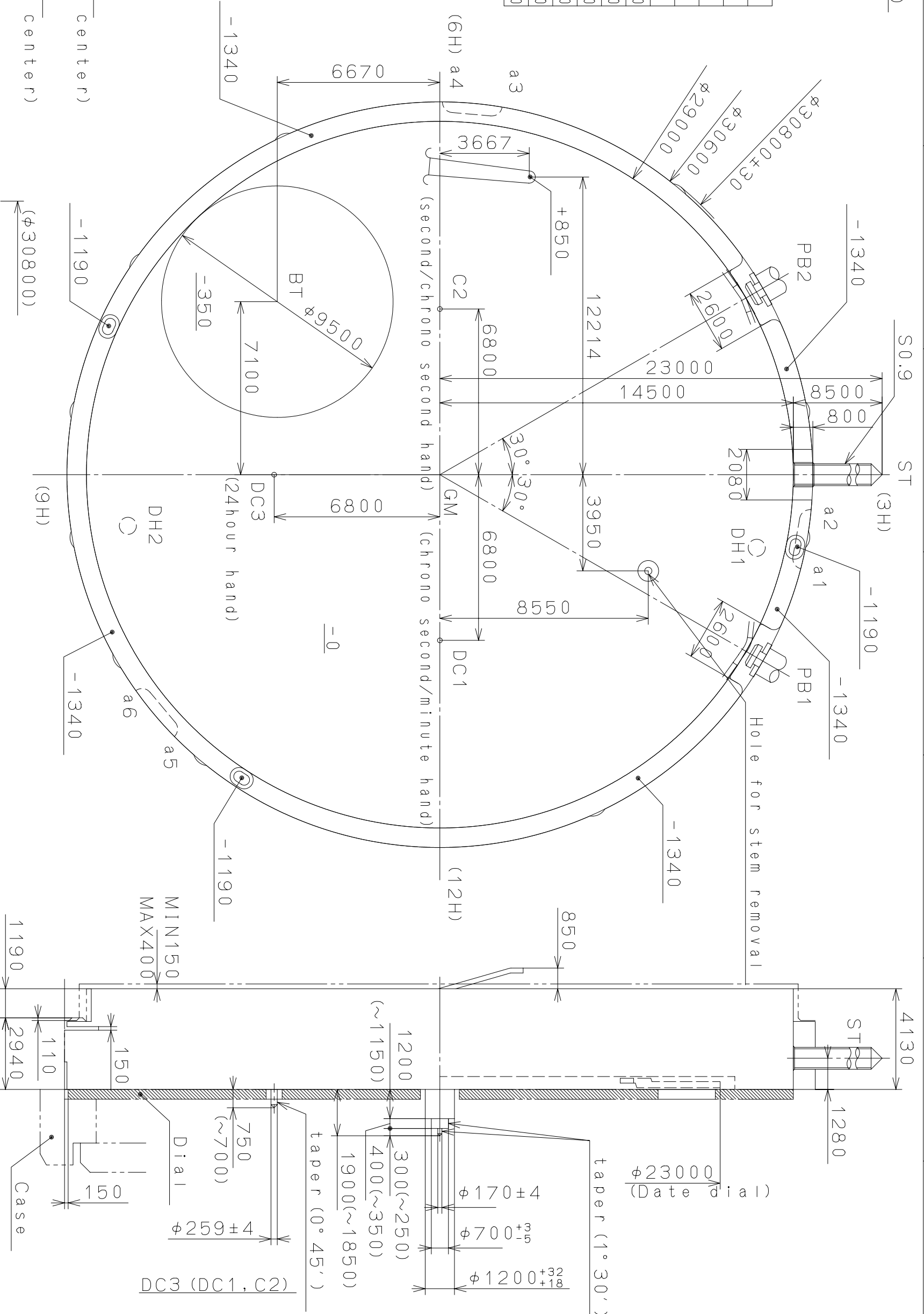
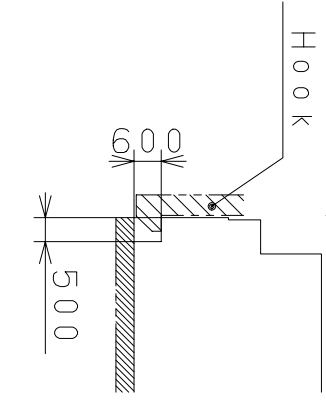


Coordinates			
記号	X	Y	R
GM	0	0	—
DH1	3000	13000	—
DH2	2100	-12800	—
a1	3441	14908	430
a2	1865	15186	430
a3	-15151	2129	430
a4	-15291	535	430
a5	10434	-11190	430
a6	9208	-12219	430

DH1~DH2=25816 (±20)
Stroke for PB
must be minimum
600⁺²⁰⁰μm



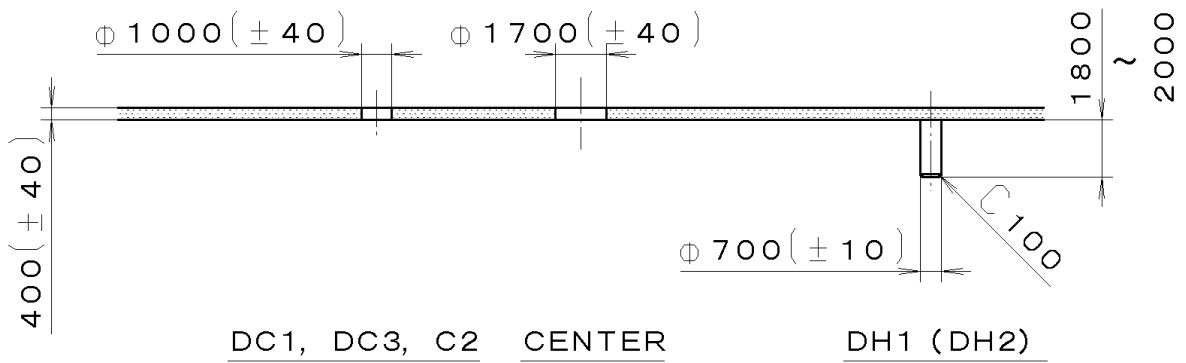
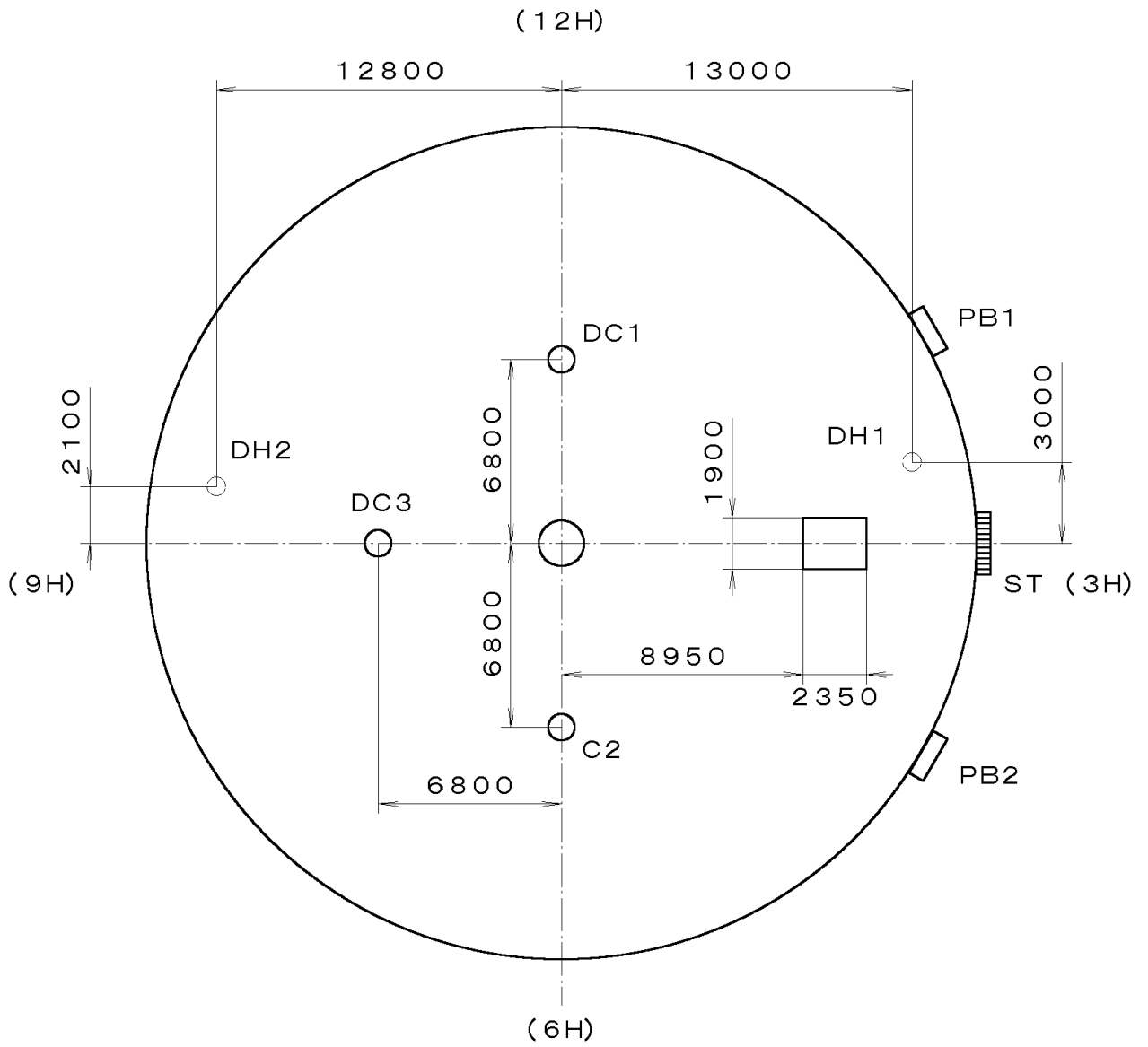
Section PB1,2



Section a1~a6

Material	Alterations	Date	Description	Appr.	Checked	Drawn	M. Fukuda	Name:	Frame for Case
Heat Treatment									Drawing No.: 0S90C000
Hardness									
Plating									
Quantity	Unit	1/1000 mm	Cal. NO.:	0S90					
Scale	6/1		Parts No.:						
Material	General Tolerances								
Heat Treatment	Dimensions								
Hardness	Angles								
Plating									

This drawing is provisional and subject to our reconfirmation and/or revision without notice.

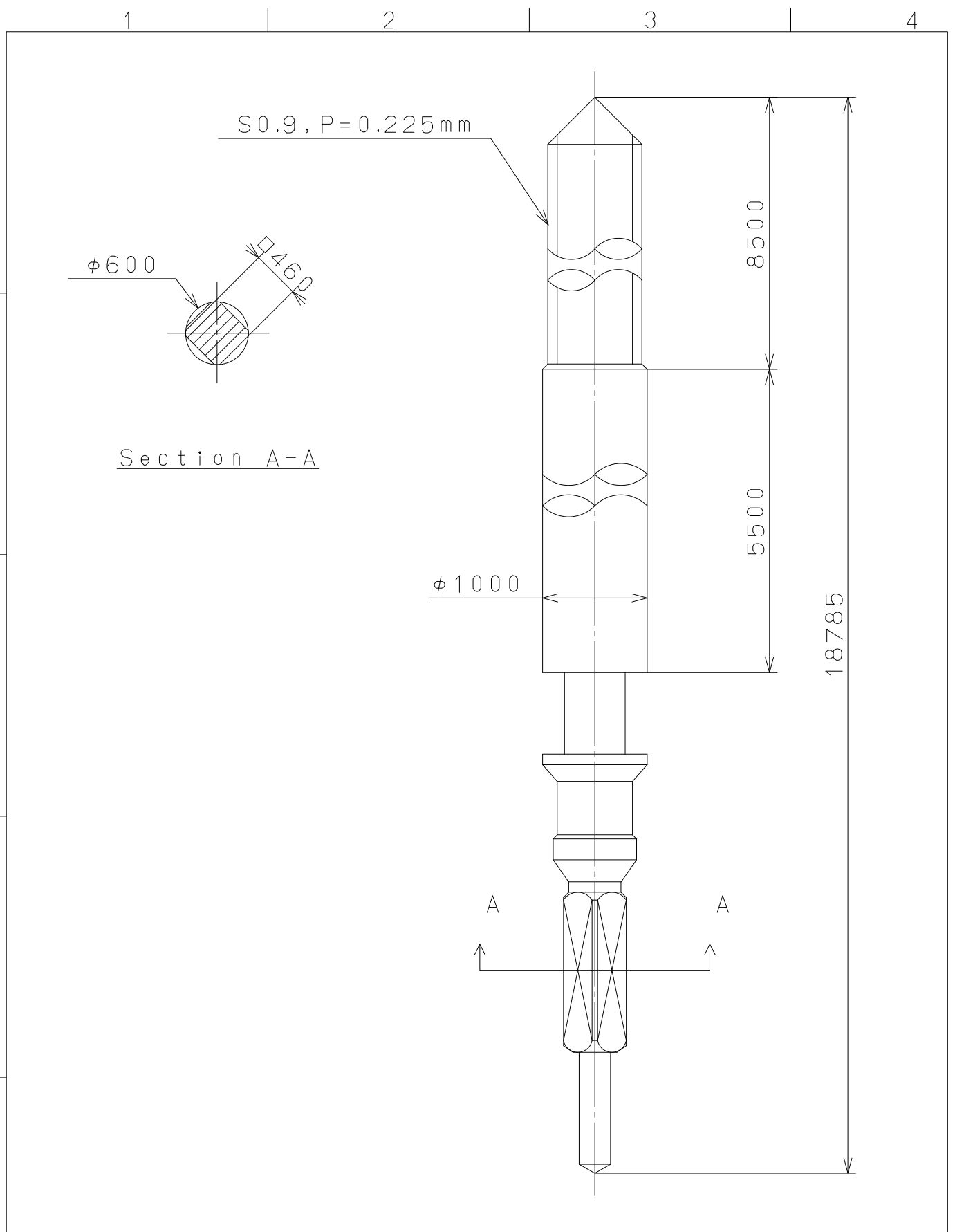


DC1, DC3, C2 CENTER DH1 (DH2)

OS10-00A (01) *** (2100 1121) 00-07-05

7			Quantity		Cal. No. :	OS90-00A
6			Unit	1/1000 mm	Parts:	
5			Scale	4:1	Name:	Indications for Dial
4			Date		Drawing No. : OS10D000	
3			Drawn			
2			Checked	T. Hiruta		
1			Approved			
Material						
Heat Treatment			General Tolerances		MIYOTA	
Hardness			Dimensions			
Plating			Angles			

This drawing is provisional and subject to our reconfirmation and/or revision without notice.



△			Quantity		Cal.NO.:
△			Unit	1 / 1000 mm	
△			Scale	20 : 1	Parts No.:
△			Date		065-453
△			Drawn		
Mark	Date	Description	Appr.	Checked	E. Murakami
Alterations			Approved	Name:	
			SETTING STEM		
Material					Drawing No.: 4530S000
Heat Treatment					MIYOTA
Hardness					
Plating					
					CITIZEN WATCH CO., LTD. TOKYO, JAPAN